



Awards Catalog & Logo Wear 2022

How does the catalog work? It is open to all members. Each item has a “Point Value,” one (1) point is equivalent to one dollar (\$1.00), i.e. if the item is 20 Points, it’s \$20 to purchase. Award winners will be given points to shop with. You may shop for just what your awarded points are OR upgrade and pay the difference. Additional items may also be purchase.

Points: All award winners will receive a certificate with their point total. For any un-used points, there will be no refunds or carry overs. Awarded points are non-transferable.

Logo & Embroidery: Each item that can be embroidered will have a crest size MNSPHC logo on it and is included in the price. **NEW:** To add your name, horse’s name, class, Grand Champion, Reserve Champion, etc.— **there is an extra charge per line. Limit of 20 characters per line. Standard size lettering is \$8.00 per line. Lettering on jacket backs, sleeves or any other larger font is \$10.00 per line.** If you would like the large size logo on a jacket back or sheet instead of the front crest, there is an additional fee of \$30.00. You will have the option to choose your embroidery color, popular colors include: Hot pink, Lime Green, Turquoise, White, Red & Silver.

How do I order: Order forms may be printed from the last page of this catalog. Please completely fill out the order form. Make sure to include your address, phone number and email address in case there are any questions with your order. Check or Money Order, made payable to MNSPHC, must accompany order form for any amount over your awarded points.

When will I get my order: Orders will be at the Member Appreciation and Awards Banquet.

NEW: If you are unable to attend, please make arrangements for your order to be picked up for you at the banquet. If this is not an option, we can ship your order to you after the banquet. There will be a \$20.00 handling fee plus shipping costs.

Order Deadline: All orders are due in by October 5, 2022

For any questions:

Contact Christina Kooiman, 952-292-5775, call or text or email: cgk112@gmail.com



Port Authority Core Soft Shell Jacket

Colors: Black, Battleship grey, Black Charcoal Grey, Deep Smoke, Navy

J317 Adult/Mens— XS - 6XL 50 Points

L317 Ladies— gently contoured XS - 4XL 50 Points

**Y317 Youth— 50 Points (Black, Navy and Battleship Grey only)
XS(4), S(6-8), M(10-12), L(14-16), XL(18-20)**

TLJ317 Tall Sizes— LT - 3XLT 50 Points

All items with embroidery include MNSPHC crest size Logo.

Lettering: Limit 20 characters per line.

Standard lettering: (font for jacket fronts, Bags: halter, garment, boot, chap, chairs, etc) \$8.00 per line.

Larger lettering: (font for jacket backs, sleeves, sheets, stall Bags, etc.) \$10.00 per line.

Large size Logo for jacket backs, sheets, etc— \$30.00



Ladies Two-tone Jacket

Nice Jacket! Port Authority Soft Shell. Colors: Black/Steel Grey, Navy/Steel Grey
Sizes XS - 4XL

L718— 55 Points



Mens Two-tone Jacket

Port Authority Soft Shell. Colors: Black/graphite, Navy/graphite,
Sizes XS - 4XL

J794— 70 Points



Port Authority All-Conditions Jacket

This hardworking, parka-length, insulated jacket is critically seam-sealed to stand up to wet, wind and cold with reliable, three-season protection.

Sizes S-4XL, Mens and Womens.

Colors: Black, Direct Blue and Navy. ↓

L331— 75 Points



Core Soft Shell Vest

Port Authority Mens or Ladies
Colors: Black, Battleship Grey, Navy, Marshmellow white
Sizes: XS—4XL

L325—45 Points





Gildan Heavyweight Sweatshirts

Gildan Heavyweight blend 8 oz. 50/50 Cotton/Poly. Double-lined hood with drawstring. Colors available: Light gray, black, maroon, sky blue, brown, dark grey, Forest Green, Light Pink, Cardinal, Navy, Purple, Red, Royal, Orange, Safety Green, White. Also available in same colors as Crew Shown below. Sizes - S - 5XL and Youth S-XL

Choices: Hooded, Crew Neck or Full Zip

Adult Size- 18500— 35 Points

Youth Size-18500B— 30 Points

Lace Up Pullover Hooded Sweatshirt

65/35 cotton/poly blend, 9 oz. Colors shown—Black, Deep Red, Graphite Heather, Heather, True Navy, True Royal. Also available in Navy, Royal & Athletic Heather. **YOUR CHOICE OF LACE COLOR**— as shown is white with gray stitch OR choose from colors below. Neon Pink & white stitch, Neon Green & white stitch, Black & white stitch, Pink Raspberry & white stitch, Purple & white stitch, Red & white stitch. Sizes - XS - 4XL



ST271— 45 Points



Eddie Bauer® - Full-Zip Fleece Jacket or Vest

This super soft and warm jacket is as comfortable as it gets for fall hikes and everyday excursions. Princess seams, dyed-to-match reverse coil zippers, front zippered pockets with tricot lining, open cuffs and an open hem. Contrast Eddie Bauer embroidered logo on right hem. Made of 6.9-ounce, 100% polyester fleece. Produced using Low Impact Technology (L.I.T.) which uses less dyestuffs, thermal energy and water for enhanced softness, performance and after-care quality. Sizes XS-4XL Colors: Black, Deep Sea Blue, Grey Steel, Navy

Women's—EB201—70 Points /Vest Option EB205-60

Men's—EB200—70 Points/Vest Option EB204-60



Let your creativity go wild! Fully Customizable Tumblers with endless possibilities!! You choose the size, colors, wording, etc. Each design can add photos and glitter for the additional personalization touch. Each Tumbler will have the North Star Logo included. Please email Christina Kooiman @cgk112@gmail.com to place your custom order!

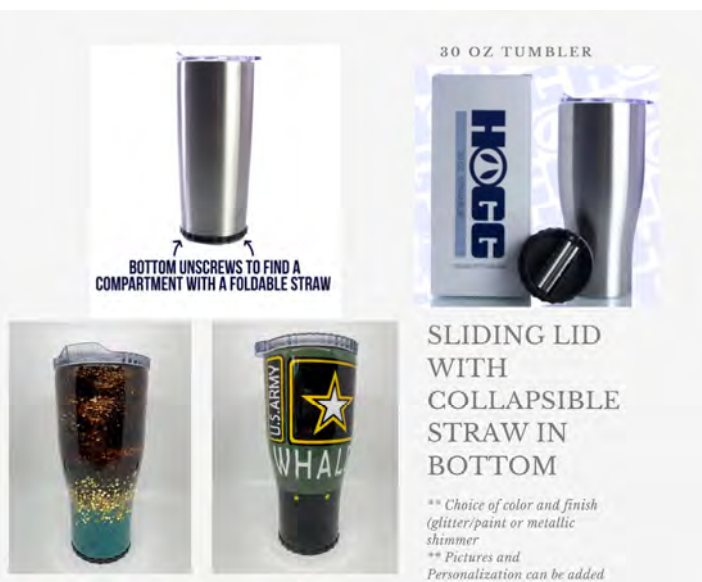
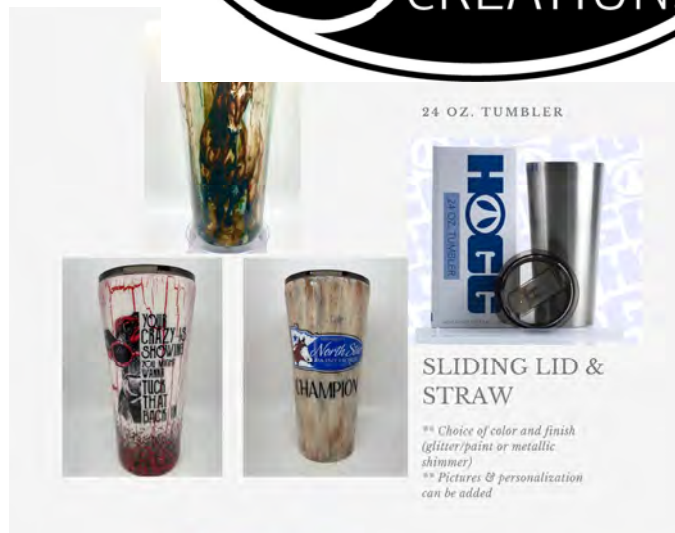
Sizes:

Tall/Skinny (includes sliding and hydro lid): 20oz and 30oz

Tumbler (includes sliding lid with collapsible straw): 20oz, 24oz and 30oz

20 and 24oz—**50 Points**

30oz —**55 Points**



Laser Engraved, Genuine Leather Patch Caps

Two different styles with endless options or colors of hat stitching. Please indicate what color hat and stitching color on the order form. Leather patch is buck stitched.



Mesh Back Style # MSH100— 35 Points ↑



Relaxed Style # RSH101— 35 Points ↓



Knit Hat with Laser Engraved, Genuine Leather Patch

This is a quality chunky knit, double layer thick winter hat! Your choice with a pom or without. Colors: Black • Dark Grey • Cream • Navy • Black & White • Burgundy & White • Grey & White • Blue & White



With Pom # KHWP— 40 Points ↑

Without Pom # KHWOP— 35 Points ↑



Supreme Chap Bag

Soft, padded case. 420D Nylon outer, quilted and lined. Hanger cut-out at top. 33 x 21 Colors - Black or Navy

15751 60 Points



Supreme Helmet Case

Keeps helmet clean. Soft, roomy case with extra space for gloves & related items, 420 denier outer, quilted & lined.

Colors - Red, Black, Navy, Green.

#10719 35 Points



Dura-Tech Quilted Garment Bag

600D Poly—40" long x 24" wide. Colors: Burgundy with black binding & gray piping, Black with black binding & blue piping.

40867 65 Points



Dura-Tech Elite Western Boot Bag

Classy 600 denier water resistant outer. Faux leather accents and tabs. Padded for ultimate protection with a separated boot compartments.

Colors: Black or Navy

#40221 65 Points



Dura-Tech Standard Garment Bag

Durable 600D polyester outer with front zippered pocket. Heavy duty zipper down side.

Color: Black, Navy, Green , Burgundy

#32325 40 Points



Dura-Tech Elite English Boot Bag

Classy 600 denier water resistant outer. Faux leather accents and tabs. Padded for ultimate protection with a separated boot compartments.

Color: Navy or Black

#40217 75 Points





Supreme Quilted Halter & Bridle Bag

420 D water repellent, quilted Nylon

Colors: Navy, Black, Burgundy, Green, Red & Purple.

#18048 40 Points



Single Western Hat Can Carrier

Colors: Black, Wine, Lime, Orange, Tan, Teal, Royal Blue, Pink, Purple

#17991 70 Points

All in one Grooming Box, Step Stool or Seat.

Removable tray & fold down carry handle

Black only

16" W x 12" H

#37165 55 Points



3 Ring Binder

Premium leather in exotic print with tooled overlay.

12" x 10" x 1 3/4"

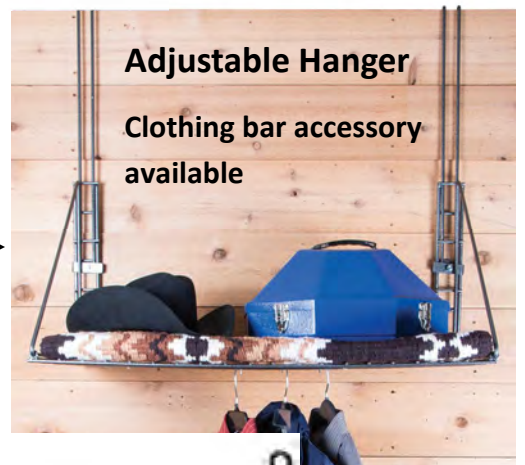
35848 155 Points

Easy Up® Fold Up Hanging Shelf with adjustable hanger

#25363 85 Points

Matching Clothing Bar Accessory

20 Points





Dura-Tech® Supreme Saddle Case

Makes transporting and protecting saddles easy. 420 denier triple ply padded nylon protects your investment. Easy load and unload with heavy duty zipper that opens all the way around. Detachable and adjustable shoulder strap for transport. Colors: Black, Navy, Purple, Burgundy (Green and Red are Western Saddle Only)

#10054 -Western Saddle– 80 Points

#10294C-English Saddle– 50 Points



Dura-Tech® Deluxe Saddle Pad Carrier

Keeps pads clean and dry between use. Allows for easy transport. Durable 420 denier nylon outer with breathable nylon mesh ends. Pads are secured with an adjustable web strap. 2 sided carrier has full length zippers for easy access. Each side can hold up to 2 Oversized Western pads or 3 English Pads. Padded shoulder strap and reinforced carry handle, Western Carrier Measures 21" H x 42"L each side expands to 5" and has a removable metal bar. English Carrier Measures 25" H x 29" L and each side expands to 7 1/2". Colors: Navy or Black

#38162-Western Show Pad Bag-85 Points

#15185-English Show Pad Bag-75 Points

Dura-Tech® Supreme Stall Front Bag

From the stable to shows, this bag conveniently stores horse wear, wraps, grooming supplies, accessories and more! Not only does this stall bag extend the life of your items by keeping them clean, it helps keep your barn aisle neat and tidy.

Measures: 29 1/2" H x 24 1/2" W x 9" D.

Colors: Black, Burgundy, Grey, Green, Navy, Purple, Red, Royal Blue and Teal

#37170– 75 Points



Dura-Tech® Large Multi-Use Gear Bag

Made of weather resistant and durable 600 denier polyester outer. Easy clean nylon lined interior. Full top zipper. Outer zippered pocket for small items. 22 1/2"W x 15"H x 11"D

#37838-45 Points

Dura-Tech® Deluxe Grooming Tote

Measures 13"L x 11 1/2"H x 9"D.

Colors: Black, Navy, Burgundy, Green and Red **#10748-30 Points**





Nylon Full Western Saddle Cover

420 Denier, water repellent, elastic around corners and fender bottoms. Colors: Black, Red, Hunter, Navy, Burgundy **#10052 30 Points**

Fleece-lined English Saddle Cover

Color: Black
#40223 50 Points



Adjusta-Fit Dura-Nylon V-Free Sheet

420 Denier, closed front

Colors: Purple, Navy, Red, Royal, Black, Burgundy, Green, Grey

Sizes: 64—86 **#10530W 95 Points**



Adjusta-Fit Dura-Nylon V-Free Sheet

CutBack Wither

← 420 Denier, closed front Colors: Red, Purple, Royal, Black, Burgundy, Green, Grey, Navy Sizes: 64—84

#10529 60 Points

Dura-Tech® Polar Fleece Square Cooler

Polar fleece weighs less, does not get heavy when wet and is machine washable. Medium or Large. Black Only

#16536 –75 Points



Dura-Tech® Polar Fleece Contour Cooler

Keep your horse warm and dry after a bath or ride with a contour cooler that is also easy to take care of. Medium, Large or XL. Black or Navy.

#38596-90 Points

PERRI'S

Premium LEATHER HALTERS



Made in America. Top quality leather, masterly assembled by Amish craftsmen and leatherworkers.

#190HBLBL Perri's Soft Padded Leather Halter

Soft, luxurious leather with colorful, genuine lambskin padding makes this piece exquisite. Double buckle padded crown and adjustable chin. Rolled throat latch.

Halter/Hardware Colors: **Black Leather/Stainless Steel Hardware or Havana Leather with Solid Brass Hardware**

Padding choices: Black, Brown, White Slate, Pumpkin, Lime, Blue, Turquoise, Pink, Burgundy, Camel, Sky Blue, Red, Purple, Hunter Green, Navy, Metallic Red, Metallic Blue, Metallic Copper, Metallic Pink, Metallic Purple, Metallic Turquoise and Metallic Gunmetal.

Sizes: Horse, Cob, Oversize

125 Points-Includes Engraved plate



#100HH Perris 1" Horse Havana Show Halter

Double buckle crown and adjustable chin.

Color: Black or Havana

Sizes: Yearling, Cob, Horse, Oversize

115 Points –Includes engraved plate



#182HBK Perris I +BD+A9 " A ; ' ;) 15+"48 & ; BB+) " B/ ; I " / # 5D+A "

The halter is finished with stainless steel hardware, a two-part adjustable chin and adjustable gullet for an impeccable fit. A double buckle crown with 1" removable buckles allows you to add your own silver buckles!

Color: Black or Havana

Sizes: Yearling, Cob, Horse

130 Points



Ultra-Flex Full Separating Zipper Slicker Hood

← Durable 8 oz. 4-way stretch Lycra. Oversized eyes, rub free design. Polar fleece lined noseband. No center seams on face or mane.

*NONZIP AVAILABLE UPON REQUEST

Sizes: **Sm** (64-68) • **Med** (68-74) • **L** (76-80) • **X-L**(80-86)

Colors: Black, Burgundy, Green, Navy, Purple, Red, Royal
13439 90 points



Dura-Tech Full Separating Zipper Slicker Hood

Economy lightweight 6.5 oz. 4-way stretch Lycra. → Oversized eyes, rub free design. Polar fleece lined noseband. No center seams on face.

*NONZIP AVAILABLE UPON REQUEST

Sizes: **Med** (68-74) • **L** (76-80) • **X-L**(80-86)

Colors: Black, Brown, Hot Pink, Turquoise

40227 70 points

Note: Slicker Hoods will not be personalized.

Mac Sports Collapsible Folding Outdoor Utility Wagon

CONVENIENT COMPACT STORAGE - Wagon folds to only 8" thick! Folded size approx. 29.5" x 20" x 8" and includes a convenient carry case. Weighs 24.5 Lbs.. LIGHTEN THE LOAD! - The heavy duty frame allows loads up to 150 lbs., and the Durable 600D Fabric can be easily cleaned. UV and mildew resistant. FUNCTIONAL FEATURES include an adjustable handle for effortless transport and 2 Mesh Cup holders to keep your beverages secure. Handle Length - Approx. 30.5 inch L. EASY TRANSPORT - Perfect for hauling gear to outdoor sporting events, concerts, trips to the park and great for use around the house. LARGE CAPACITY - Sets up in seconds, No assembly required!. Outside dimensions approx: 35.5 inch x 20.1 inch x 22.5 inch. Inside dimensions approx: 32 inch x 20.1 inch x 17.4 inch



Available in Black or Blue

#WAG01 120 Points



8 x 10 Photo Frame— 35 Points

Measures approximately 12 x 14 x 3/4

Add 4 Points for engraved Silver or Gold plate.



8 x 10 Photo Frame— 40 Points

Measures approximately 16 x 13 7/8 x 2.5

Add 4 Points for engraved Silver or Gold plate.

Note: Medal stars shown on pieces are no longer available, piece will come without stars



8 x 10 Photo Frame Holds 1—3 Buckles

45 Points Add 4 Points for Engraving on Gold or Silver plate—replaces top center star.

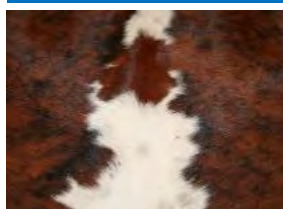


Medium Hinge Topped Box— 55 Points

Includes engraving on white cowhide diamond.

Box Measures 14 x 9.25 x 5

NOTE— Please specify your choice for the frames or box— Cowhide Color, Stain Color and Embellishments...



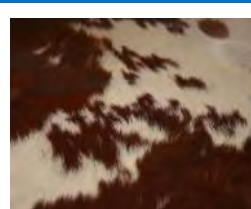
Tri Colored



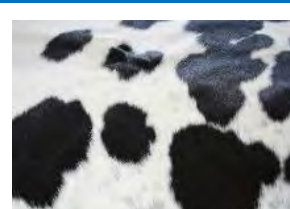
Brown & White



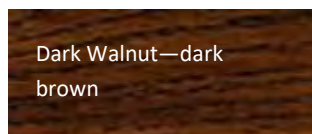
Brindle



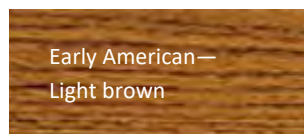
Red & White



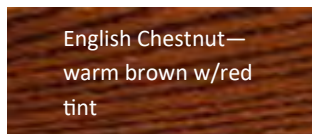
Black & White



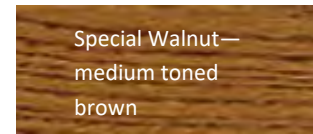
Dark Walnut—dark brown



Early American—Light brown



English Chestnut—warm brown w/red tint



Special Walnut—medium toned brown



Old Copper



E Tacks textured



Glossy Black



Hammered Copper



Z Tacks dark brown textured



Nickel Plated



Pewter



4 Buckle Display — 65 Points

22.25 "x 13.75 " x 2"

Add 4 Points for engraved Silver or Gold plate.

3-6 Buckle Display

80 Points

23.25 "x 14.5 " x 2.25"

Add 4 Points for engraved Silver

Single Buckle Display — 40 Points

8"x7"x2.5"

Sliding Glass—Wall mount or stands alone



Note: Medal stars are no longer available, item will come without stars.

5-6 Buckle & 5x7 Frame—90 Points

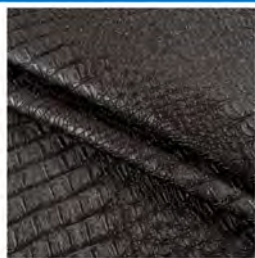
26.5" x 18.5" x 2", slots measure (1) 20" and (2) 5.5"

Add 4 points for silver or gold engraved plate

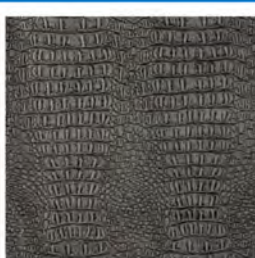
NOTE— Please specify your choice for the Displays— Cowhide Color, Stain Color and Embellishments from page 15, and Backing options for the 3-6 and 5-6 Buckle Display below



BLACK FLORAL



DARK BROWN GATOR



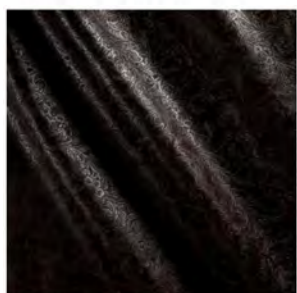
PEWTER GATOR



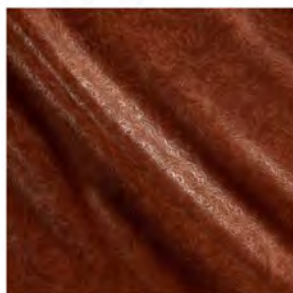
PALOMINO GATOR



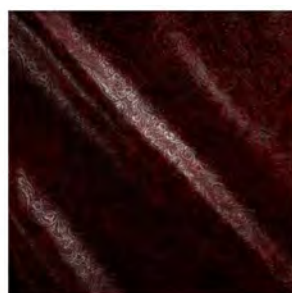
COPPER GATOR



DARK BROWN FLORAL



BOURBON FLORAL



WINE FLORAL



COAT/HAT RACK

25" x 9.25" x 2.25", includes cowhide engraved diamond

CHCO-65 Points

Small Glass Top Table

15.72" x 11.25" x 19.5" tall, includes engraved cowhide diamond on bottom shelf and cowhide lining (cast iron stars are no longer available)

CHSGT-145 Points



Dry Erase Board

21.5" x 27.5" with an 18" x 24" white board, includes engraved plate at the top and marker holder at bottom, pictured with a leatherette engraved patch at top (stars on sides are no longer available) .

CHDEB-60 Points

Cowhide Pillow Cover

CHP15 - 15" 55 Points

CHP20 - 20" 60 Points

Double sided cowhide. Can attach an engraved leatherette patch, or cowhide overlay patch, or engrave on the white random cowhide area.



Cowhide Purse

Will come with leatherette patch like on the pillow covers.
13"x 11" with an inside pocket.

CHPURS-75 Points





Cowboy Bronze

Available in 3/4 (the backside is flat) or Full Body (full statue front & back). Also in Bronze, Generic Painted (their choice of paint) or Custom Painted to match your horse. All include brass name plate.

Listed here are just a few of the styles to choose from... there are too many to list. To see more, visit the Cowboy Bronze website www.comboybronze.com and view the Product Catalog. To order a different style than listed here, contact Christina Kooiman 952-292-5775 call/text or cgg112@gmail.com for pricing. For custom painting to match your horse, we will need to get a quote.

Full body



FBNHH

Full Body New Halter Horse - 8.5" tall
Bronze 170 Points
Generic Painted - 200 Points

Full body

PFBMSENG



Full Body Trotting English Horse - 8" tall
Bronze 235 Points
Generic Painted - 265 Points

Full body

#PFBMSSR



Full Body Trot Sr. West Pleasure - 8"
Bronze 235 Points
Generic Painted 265 Points

3/4 Flat Back



#PCBHH

Generic Painted Halter Horse - 8" tall
Generic Painted 100 Points (as shown)
Bronze - 115 Points

3/4 Flat Back

#CBSENG



English Horse - 8" tall
Bronze - 95 Points
Generic Painted - 110 Points

3/4 Flat Back

#PCBSR



Sr. Western Pleasure Horse - 8" tall
Bronze - 95 Points
Generic Painted - 110 Points

A little smaller and no tack. Each piece is Full body Bronze on 3/4" base.



#CLPR20—Performance Horse
110 Points



#CLH21—Halter Horse
110 Points



#CLPL20—Pleasure
110 Points



#CLE20—English
110 Points



CB15

Flat back Halter Head 6" tall
Bronze - 55 Points



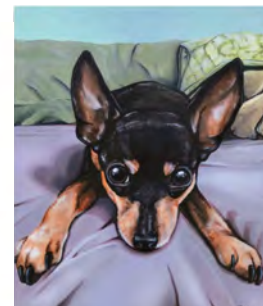
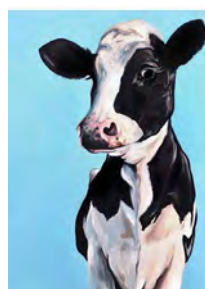
C113

****NEW**** 8" Tall Cowboy Crystals Halter Horse
180 Points



C111B

Cowboy Crystals 6 1/2" Tall
80 Points



**Popular solid
background
colors**



Custom Animal/Pet Portraits painted by Destiny

Finished pieces in acrylic on stretched gallery canvas. Can be hung as they are or can be framed. Choice of a plain background or background of your sending. The "larger" the print size, the more detail like whiskers etc. 12 x 12 size tend to make faces look bigger.

- ◆ 12 x 12 solid background **80Points**
- ◆ 11 x 14 solid background **90 Points**
- ◆ 16 x 20 solid background **100 Points**
- ◆ 12 x 12 with background **95 Points**
- ◆ 11 x 14 with background **105 Points**
- ◆ 16 x 20 with background **130 Points**

To order: Submit photo to be painted from, background choice, animal's name and she likes to know a little about them to help her capture their personality!

Custom made Belt Buckles

6 Styles - Choice A, B, C, D, E or F



A, B or C: 135 Points each

D, E or F: 110 Points each

Choose Stone Color: Blue, Light Blue, Dark Blue, Red, AB, Clear, Light Green, Purple, Pink, Topaz, Black, Fuchsia, Teal or Light Turquoise.



Kathy's Show Halters

Many styles to choose from... above are two styles showing a Regular Cut and a Congress Cut... but not all styles are available in each size.

Visit www.Kathysshowequipment.com

Browse Kathy's Store—Halters—Santana Halters to pick the style of your choice and size needed.

All are Standard Dark Leather. Each halter will have a description of the design.

- ◆ Choose your style
- ◆ Choose Regular Cut or Congress Cut
- ◆ Size
- ◆ Buckle choice
- ◆ Stone color if applicable (Blue, Light Blue, Dark Blue, Red, AB, Clear, Light Green, Purple, Pink, Topaz, Black, Fuchsia, Teal or Light Turquoise)

Information is available on correct sizing and how to pick which cut (Regular or Congress) is best for you .

Kathy's Show Equipment is one of our sponsors offering this great deal! Halters are regularly priced at \$430. plus shipping!

Halters 350 Points each





Kathy's Custom Spur Straps

#Y1 -165 Points

Spur strap price is for the style shown...if you prefer a different style from Kathy's website... we will need to get a quote.



A

A— 395 Points



B

B— 395 Points



C

C— 395 Points



D

D— 395 Points



E

E— 195 Points



F

F— 295 Points



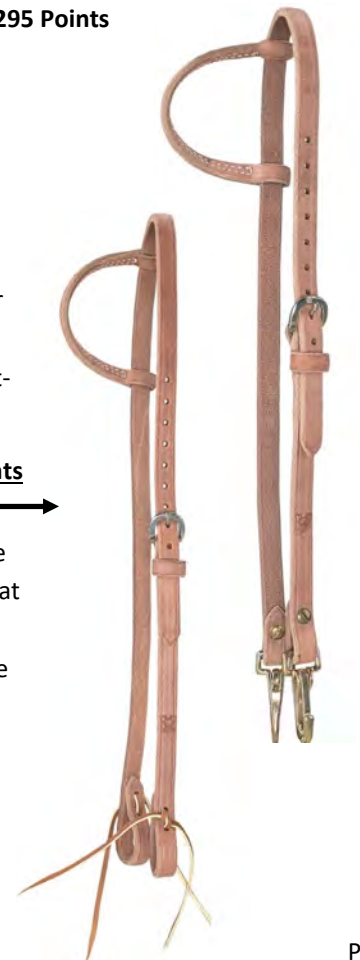
One-ear working headstall with durable brass snaps for quick and easy changing. Made from 100% US harness leather with plenty of holes that allow for lots of adjustment. Choice of snap or tie ends.

50 Points



Harris harness leather reins made from 100% US native extra heavy steer hides. These are thicker and heavier at the bit end with a nice tapered thickness through the handhold area and heavy tails to hang nicely. These are 5/8" wide and are the most popular width of our rein offerings. Choice of tie or slip ends.

55 Points





Leier Longe Line

25 Foot and Black Only

70 Points



Kellerman Rubber Trailer Tie and Cross Ties

Measure tip of snap to tip of snap:

18 Inch—**25 Points**

26 inch—**30 Points**

32 inch— **32 Points**

Pair of 5 ft for a 10 ft aisle—

85 Points

Pair of 6 foot for a 12 foot aisle—**90 Points**



Dura - Tech Folding Tall Directors Chair

Black powder coated finish

Colors - Black or Navy

#38052 125 Points



Dura - Tech Folding Short Directors Chair

Black powder coated finish

Colors - Black or Navy

#38051 90 Points



*Hay***CHIX**
Feed like a BOSS.



North Star Bucks

To be used in 2023 only.

May be used towards Stalls, Entry Fees or Directory Ads.

Available in these amounts **ONLY**

- ◆ 5 Bucks
- ◆ 10 Bucks
- ◆ 20 Bucks



HayCHIX Half Bale Bag

Choice of rope color above

#HC101— 40 Points